

# Is It An Ash Tree?



---

Ohio State University  
Extension

---



# Is It an Ash Tree?

- Plants in the genus *Fraxinus*.
- Compound leaves that are arranged opposite on the stems.
- Leaves are odd-pinnately compound.



Opposite leaf  
and branch  
arrangement



Odd-pinnately  
compound leaves

# Is It an Ash Tree?



Ash flowers are not ornamental and occur before the leaves expand, usually in April.

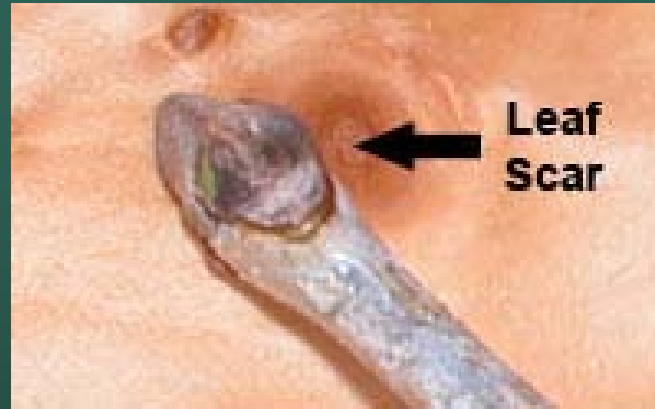


Ash seeds are called “samaras” and are winged seeds that are distributed by wind. Samaras are one-to-two inches in length.

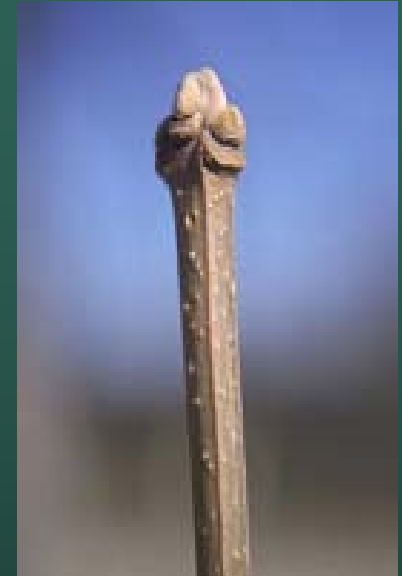
# Is It an Ash Tree?



White ash leaf scar is horseshoe-shaped and the bud “sits” in the leaf scar.



Green ash leaf scar is D-shaped, with bud above the scar.



Blue ash buds; square stem.



Black ash has black buds.

# White Ash – *Fraxinus americana*



White ash leaf scar is horseshoe-shaped and the bud “sits” in the leaf scar.

## Cultivars of White Ash:

- Autumn Applause (M)
- Autumn Purple (M)
- Rosehill (M)
- Skyline

## At maturity:

Height: 50-80 feet

Leaves: 5-9 leaflets, with entire margins or some slight serration.

# Green Ash – *Fraxinus pennsylvanica*



Green ash leaf scar is D-shaped, with bud above the scar.



## Cultivars of green ash:

- Cimmarron
- Emerald
- Marshall's Seedless (M)
- Patmore (M)
- Summit

## At maturity:

Height: 60 feet

Leaves: 5-9 leaflets with serrated margins

# Blue Ash

*Fraxinus quadrangulata*



Blue ash buds; square stem.

More common in western Ohio.

One cultivar: True Blue.

# Black Ash

*Fraxinus nigra*

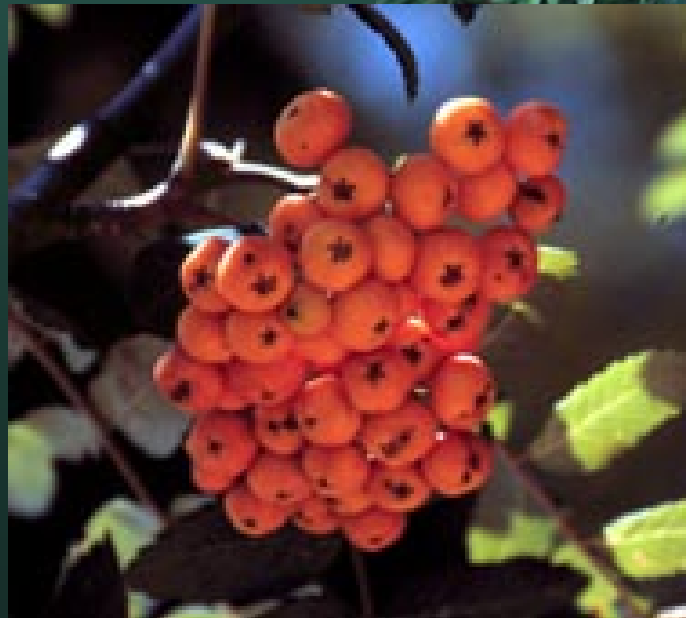


Black ash has black buds.

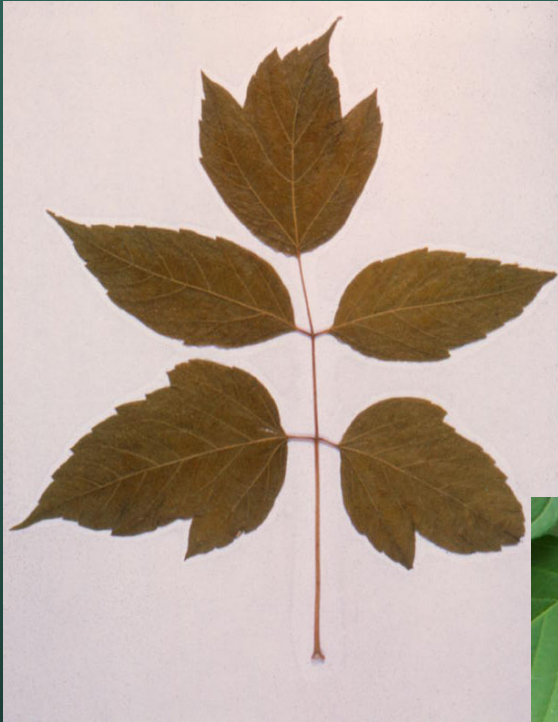
Not a common ornamental.

# European Mountainash

- Alternate buds and branching.
- Odd-pinnately compound leaf, 9-15 leaflets.
- This plant is *Sorbus aucuparia* and is not in the *Fraxinus* genus.



# Boxelder or “Ash-leaf Maple”



Leaf scars encircle twig and meet at a sharp angle; buds red or green and pubescent.



Leaves with 3 to 5 leaflets; coarsely serrate, sometimes with a lobed terminal leaflet.

UGA0008304

# Author

Jane C. Martin, OSU Extension, Franklin County

This slide set is part of the Master Gardener Emerald Ash Borer Specialization Program and is used in conjunction with presentations about this exotic insect pest.



# Photo Credits

Jane C. Martin, OSU Extension, Franklin County.

Ohio State University Extension.

Daniel A. Herms, Department of Entomology, OSU/OARDC and OSU Extension.

Joe F. Boggs, OSU Extension, Hamilton County and South Center Horticulture Specialist.

Curtis E. Young, OSU Extension, Allen County.

Ohio Public Library Information Network .

Ohio Department of Natural Resources, Division of Forestry.

Amy K. Stone, OSU Extension, Lucas County.

OSU Plantfacts Images, Department of Horticulture and Crop Science.

U.S. Forest Service.



---

This presentation is copyrighted; however, it may be used by those outside the University for educational purposes, providing the source is credited.

Copyright © 2004, The Ohio State University